



DIGITAL DIALOGUE

PREVENTION PLANNING



Rethinking Our Approach

FUNDAMENTALLY RESHAPING OUR
RESPONSE TO CHILD ABUSE AND NEGLECT



Speakers

*Join the National
Conversation
on Child Abuse
and Neglect*



SPEAKER

Amelia Franck Meyer, Ed.D., LISW, APSW
CEO, Alia



MODERATOR

Nilofer Ahsan

Lead, Knowledge and Partnerships,
CANTASD

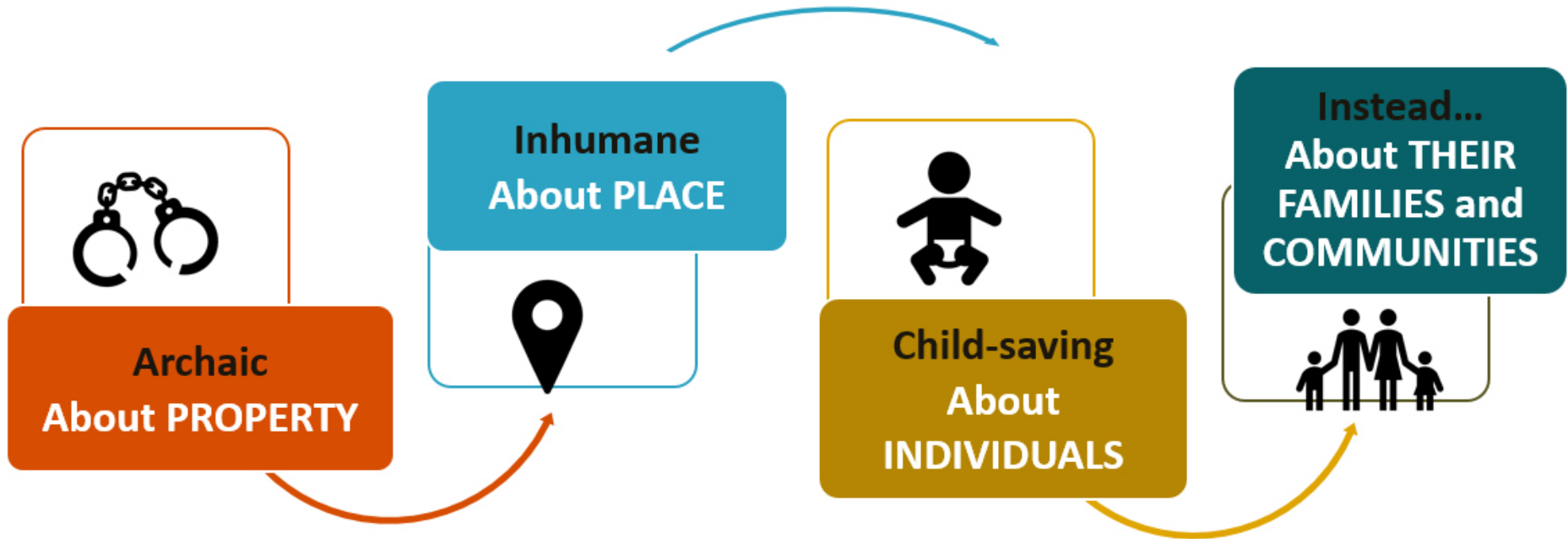
cantasd.acf.hhs.gov



Three-Part Series: Putting the Pieces Together

- 
1. *Digital Dialogue—Workforce Wellbeing: Centering Yourself to Better Support Others*
 2. *NCCAN Conference—The Human Need for Belonging: Moving from Harm to Healing*
 3. *Digital Dialogue—Rethinking Our Approach: Fundamentally Reshaping Our Response to CAN*

Imagining a new system



**When you know better,
you must do better.**



Fundamentally rethinking our purpose:
How do we keep children safely
with their families,
not *from* their families?

What would it take?



To keep every child
safely at home or
safely in their own family?

To help families who are
struggling?

Social Return on Investment Study

*Join the National
Conversation
on Child Abuse
and Neglect*

Foster care “well done”

\$1.00 invested= -\$3.64*

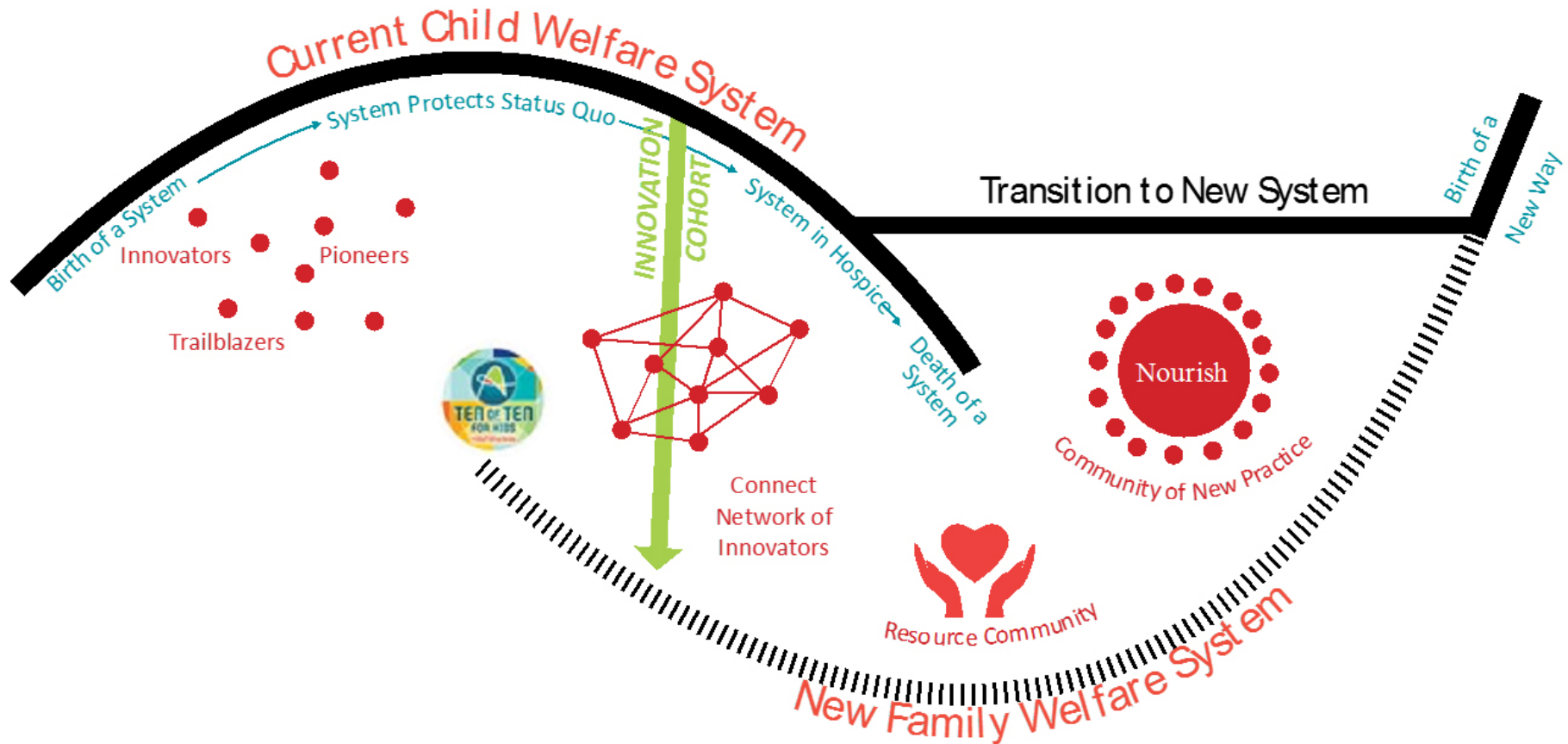
Foster care “typically done”

\$1.00 invested= -\$9.55*

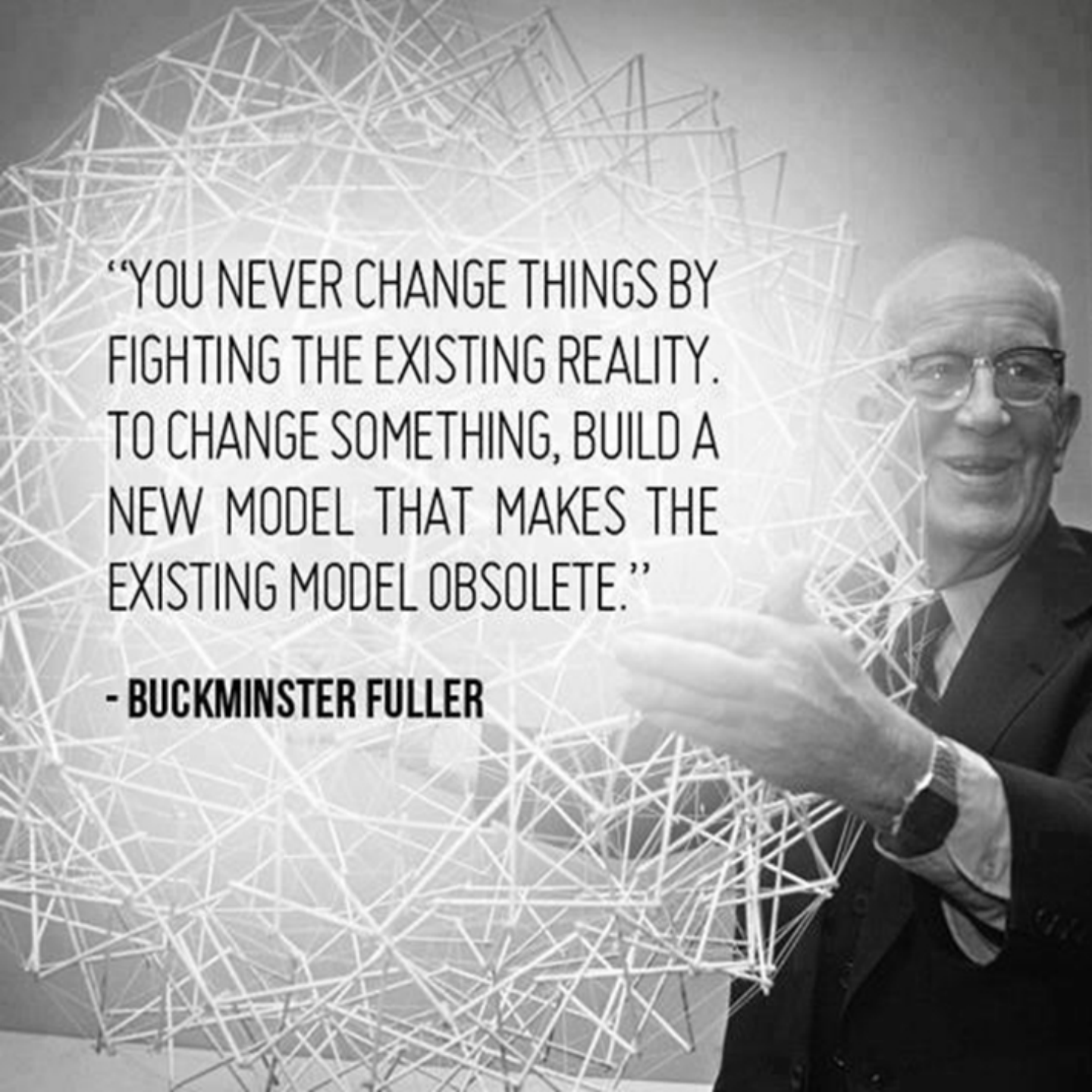
cantasd.acf.hhs.gov



Evolution of a System



Adapted from Wheatley, M. & Frieze, D. (2006). *Using emergence to take social innovations to scale*. The Berkana Institute. <https://margaretwheatley.com/articles/using-emergence.pdf>.



“YOU NEVER CHANGE THINGS BY
FIGHTING THE EXISTING REALITY.
TO CHANGE SOMETHING, BUILD A
NEW MODEL THAT MAKES THE
EXISTING MODEL OBSOLETE.”

- BUCKMINSTER FULLER

**We must
build a
new way**

BLOCKBUSTER



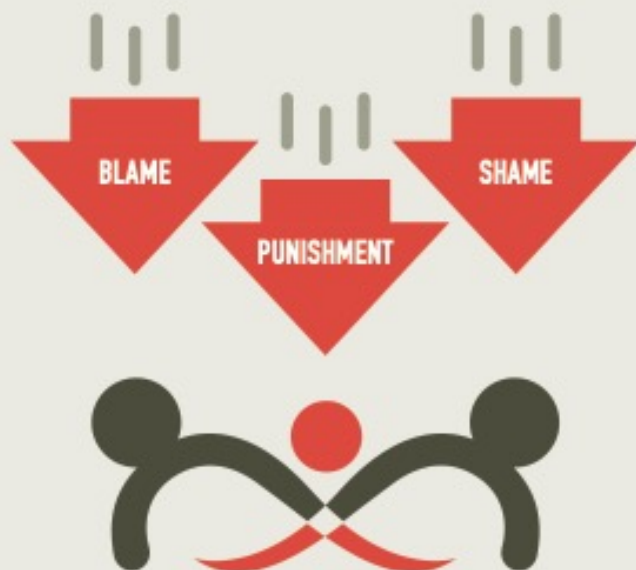


How might we redesign a better child welfare system?



Traditional Child Welfare System

Current child welfare approaches often **UNDERMINE** the family system



The current system adds more pressure on families in times of challenge, which undermines family wellbeing and healthy childhood development.

An UnSystem

UnSystem approaches **BUILD** family wellbeing and support healthy child development



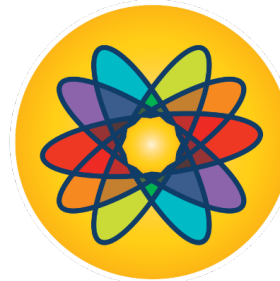
Guiding Principles



**PROTECT RELATIONAL
CONNECTIONS AS SACRED**



**NURTURE THE CAPACITY
FOR JOY**



**INSIST ON RACIAL EQUITY AND
RADICAL INCLUSION**



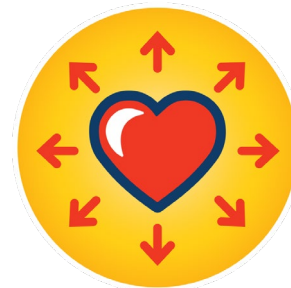
DARE TO SHARE POWER



**COMMIT TO INTERGENERATIONAL
WELLBEING**

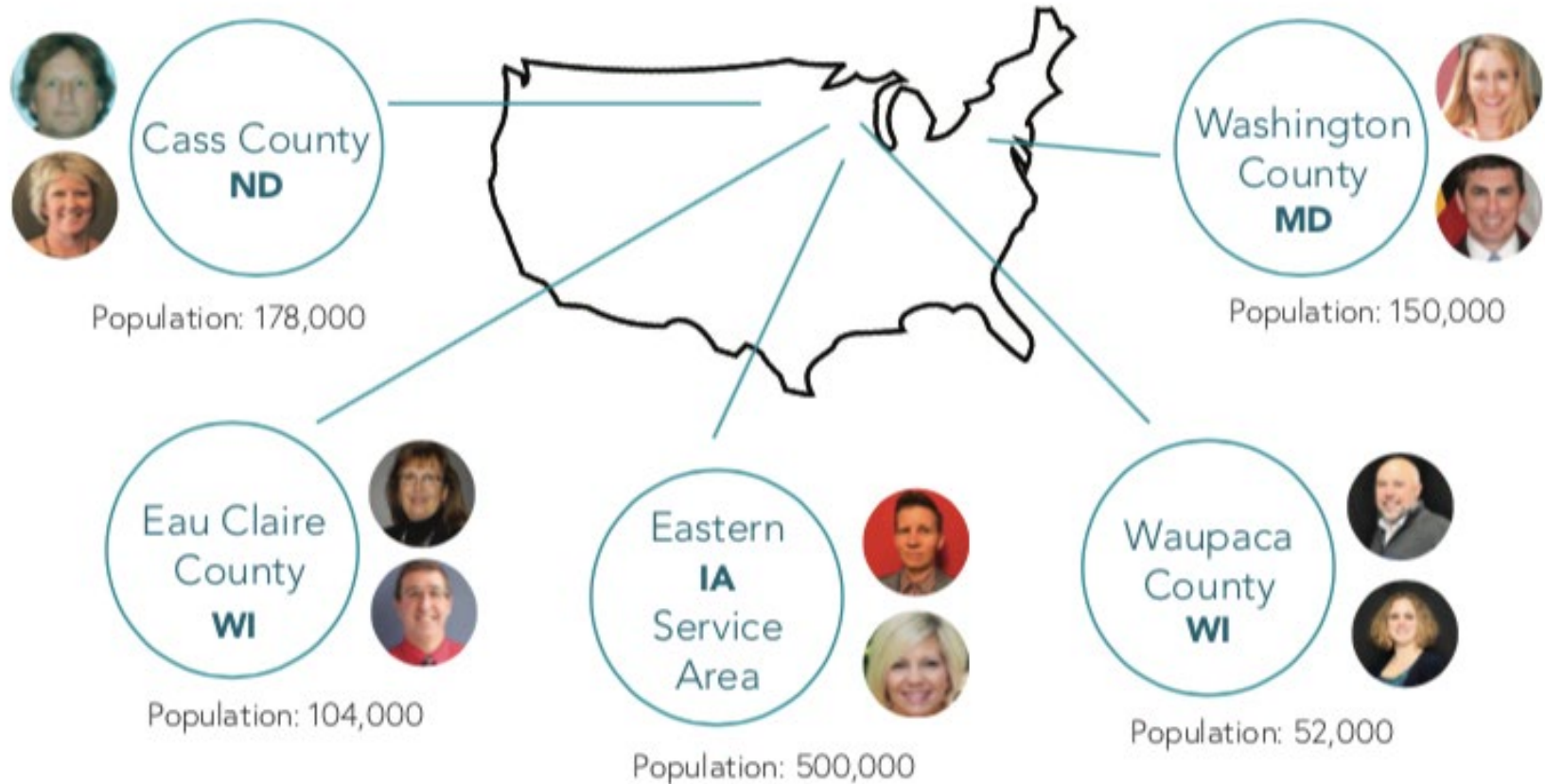


**TRUST THE WISDOM
OF CHILDREN AND FAMILIES TO
DESIGN THEIR OWN FUTURES**



DO WHAT LOVE WOULD DO

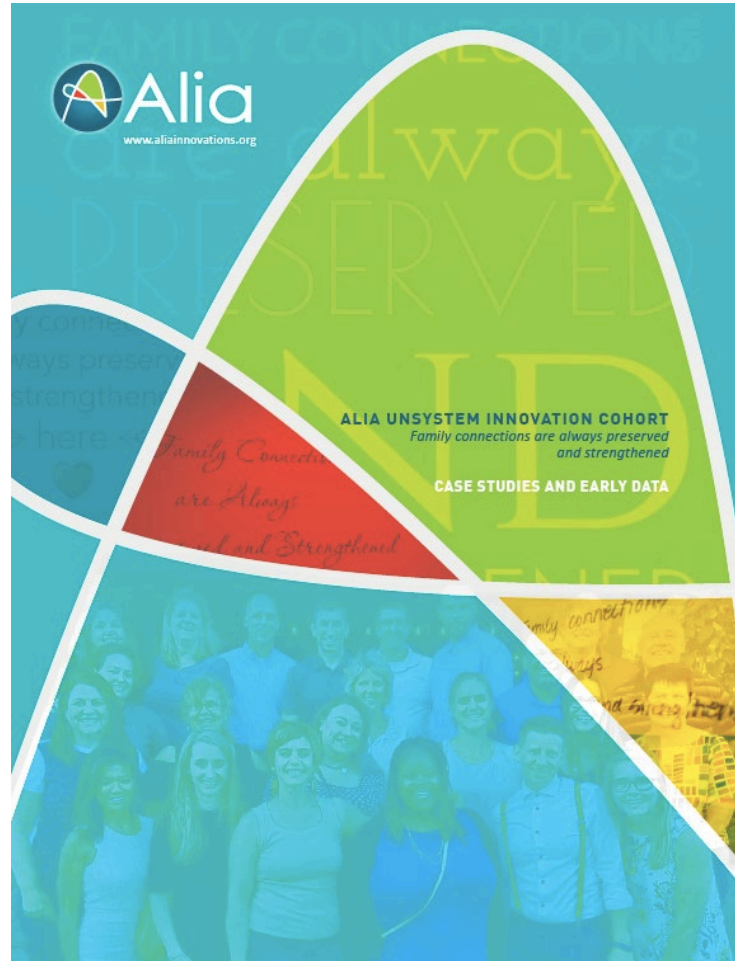
Alia Unsystem Innovation Cohort



Innovation Cohort Case Studies and Early Data

*Join the National
Conversation
on Child Abuse
and Neglect*

cantasd.acf.hhs.gov





Other Reports Coming Soon:

Research Brief on preserving
families & placing with kin

SROI: Keeping children safely
at home or placing with kin

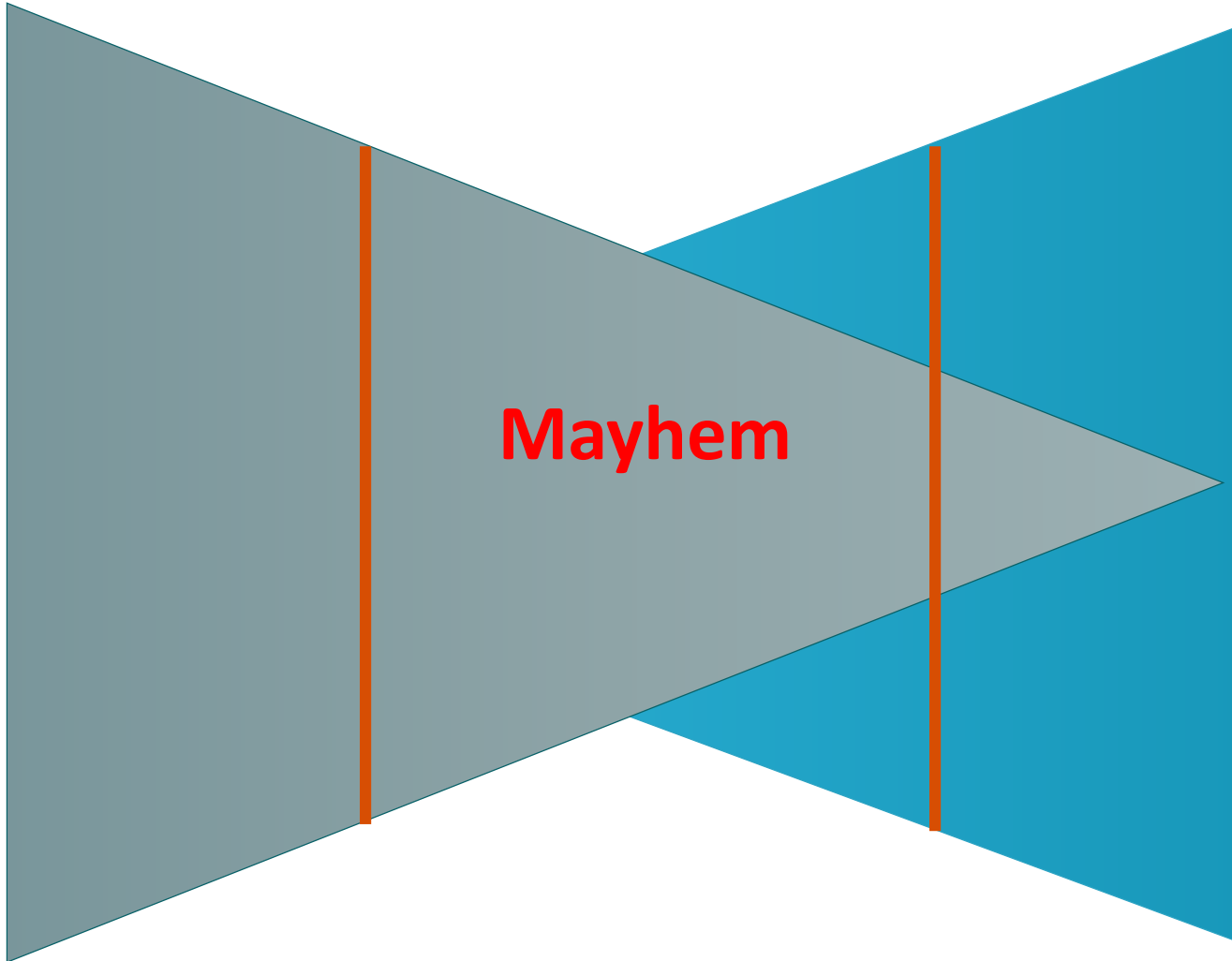
Year One Innovation Cohort
Outcomes

The social return on
investment impacts of racial
bias for youth in care
(*pending*)

www.aliainnovations.org

What to Expect

Old way | Scaling down



New way | Scaling up

Resources

*Join the National
Conversation
on Child Abuse
and Neglect*

- www.aliainnovations.org
- 10 of 10 for Kids video:
<https://www.aliainnovations.org/10of10forkids/>
- Early Cohort Publication & Ecotone SROI Report:
<https://www.aliainnovations.org/resources/>
- Amelia's TEDx Talk: *The Human Need for Belonging*
<https://www.youtube.com/watch?v=-r-ci4iybt8&t=323s>

Discussion

*Join the National
Conversation
on Child Abuse
and Neglect*



Amelia Franck Meyer

www.aliainnovations.org

amelia@aliainnovations.org

@alfranckmeyer

@aliainnovations

cantasd.acf.hhs.gov



Participant Feedback

*Join the National
Conversation
on Child Abuse
and Neglect*

Thank you for your participation!
How useful was this session?

Additional Comments: hello@CANTASD.org

